



REVOLUTIONARY INSPECTION TECHNOLOGY



PROTECTING PEOPLE FROM PATHOGENS

During post-pandemic, we learned cleanliness standards can not be based on visual subjective assessments and need to be quantified and traceable.



Our lab test shows that even seemingly clean cutting boards can harbor bacteria. (real images)

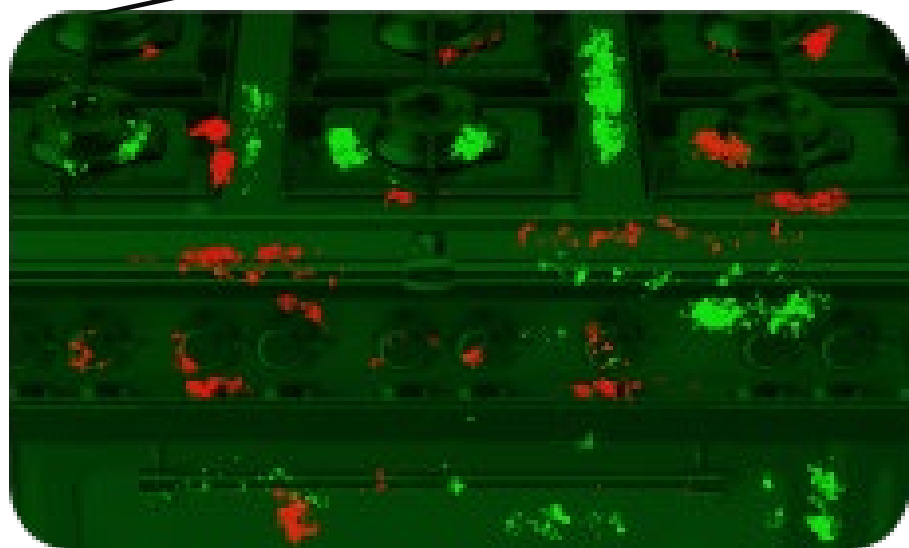
- ❖ Invisible contamination causes death, business interruption and brand damage*
 - ❖ Sanitization standards are difficult to quantify & police
- Dramatic Advancements to LED's, Computing Power, AI and Edge computing coupled with our improvements to our licensed technology now enables us to offer the only cost-effective real time handheld detector of invisible contaminants on the market.
 - We see hosts for bacteria & viruses that are invisible to the human eye

** In US 80,000+ of lives & billions in brand & enterprise value at risk*

HOW IT WORKS in food facilities

Based on fluorescence imaging under indoor ambient light

Residue detection

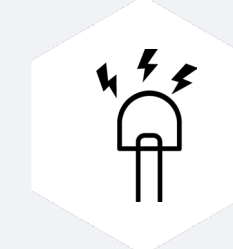


Raw animal protein residues

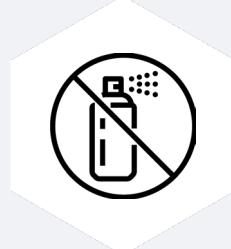
Food, oil & grease residues

Leafy greens residues

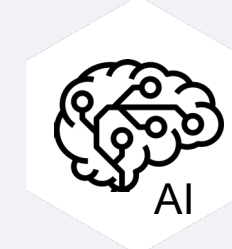
Fecal matter contamination



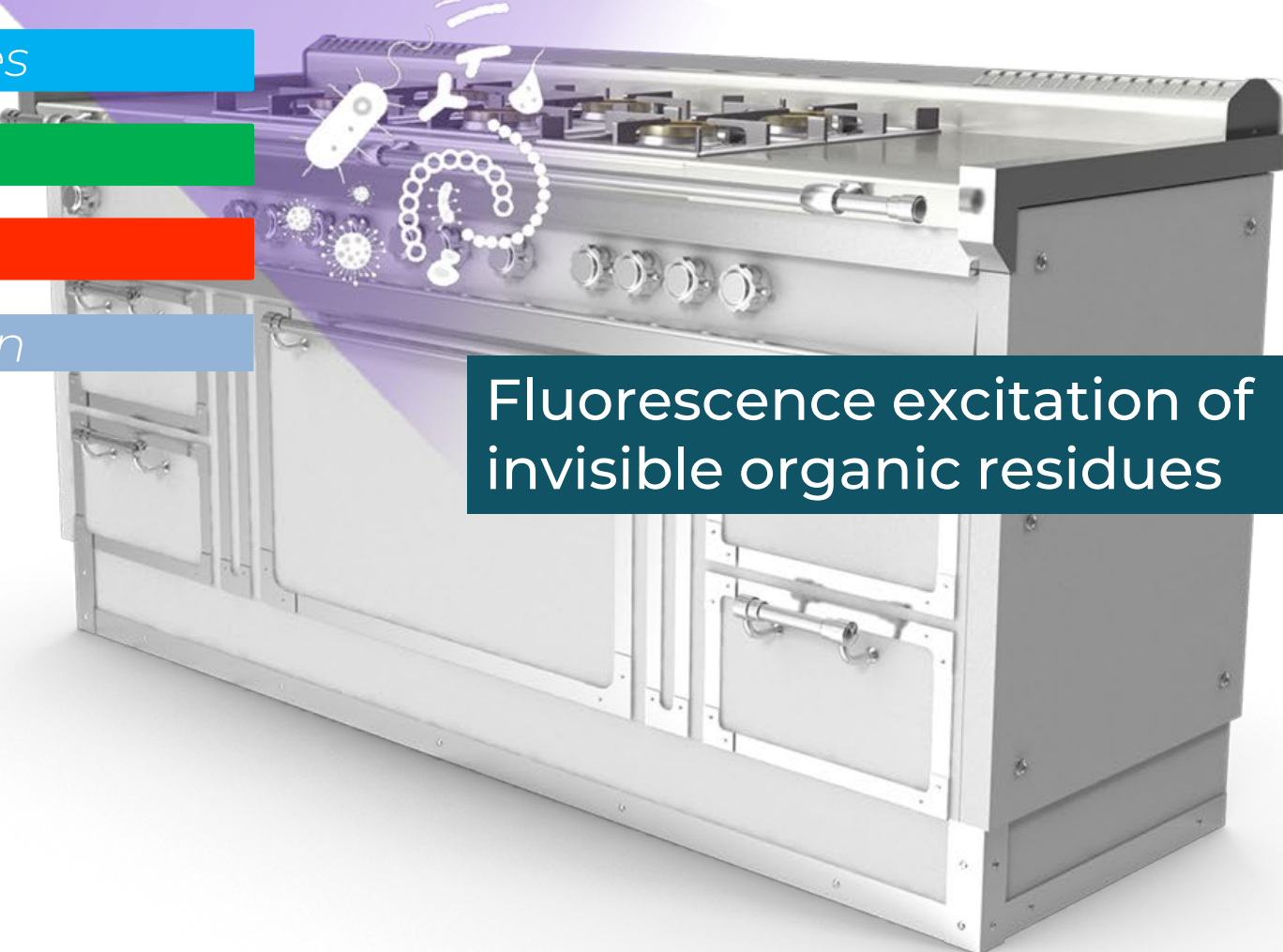
High power LEDs



No fluorescent dyes or reagents required



Proprietary algorithm detects contamination



Fluorescence excitation of invisible organic residues

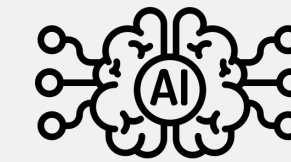
INTEGRATED TECHNOLOGY SOLUTIONS

➤ OPTICAL SCANNERS TO
DETECT CONTAMINATION
UNDER AMBIENT LIGHT



Future devices (*patents pending*) can be an attachment on smart phones

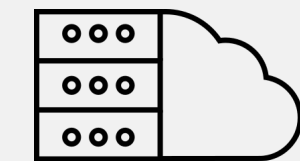
Unique Data Is Our Secret Sauce



Fusion AI



Multimode
Sensors

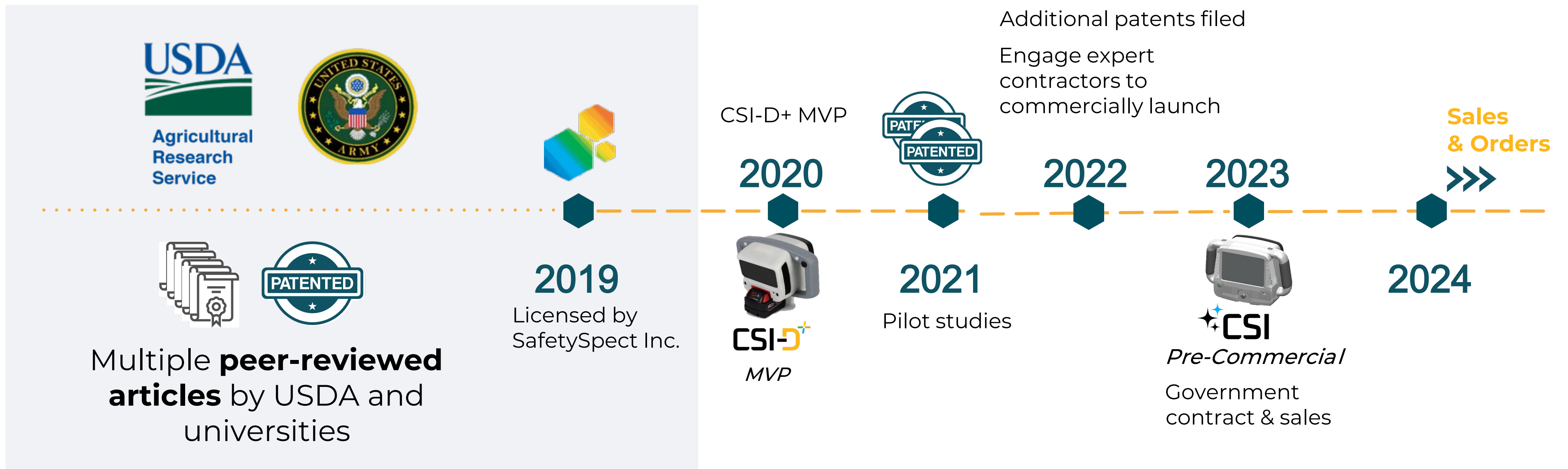


Edge
Computing

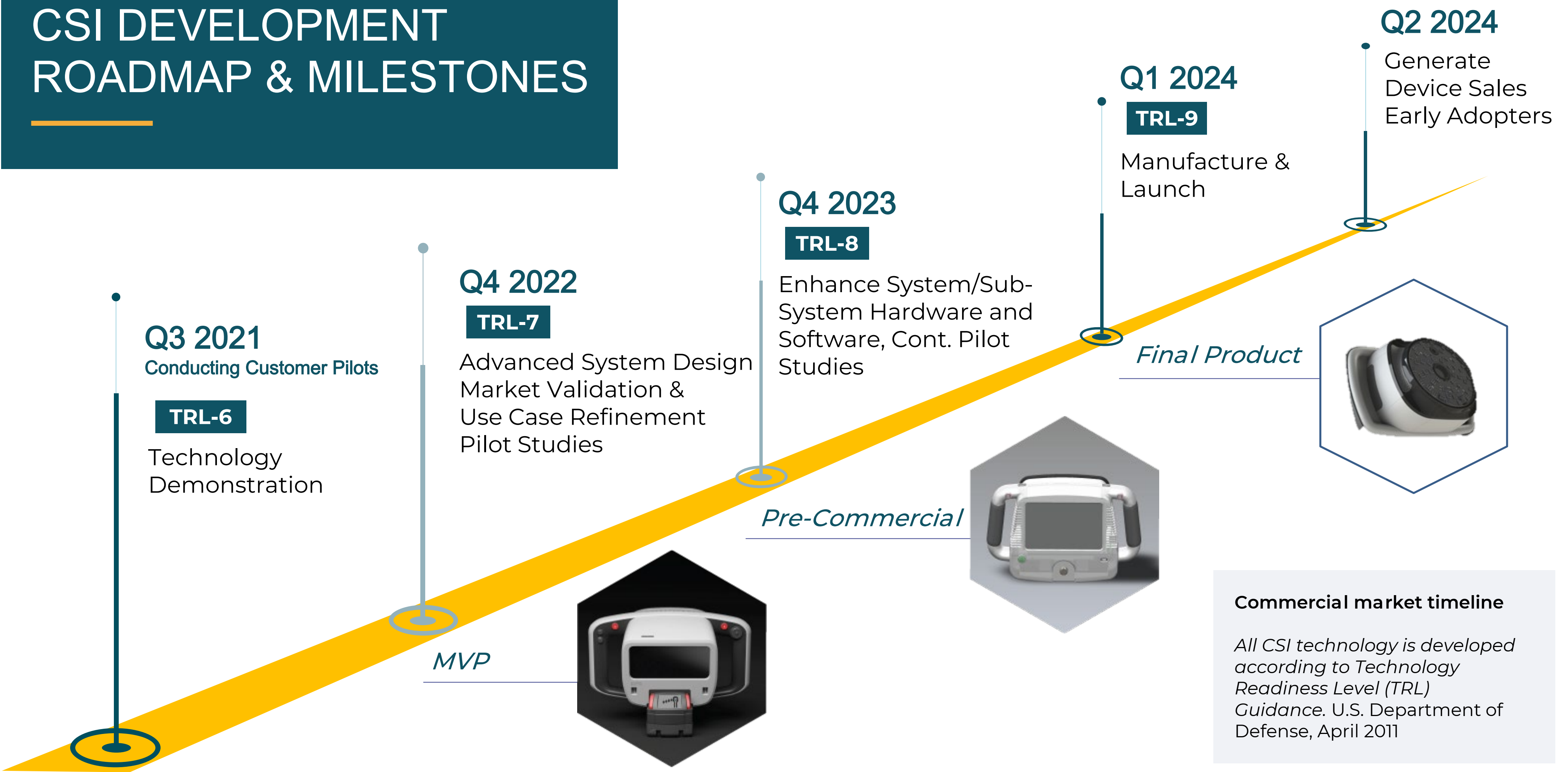
Proprietary sensor technology powered by Machine learning algorithms providing **unique data sets**

TECHNOLOGY EVOLUTION

- Significant government investment by the USDA-ARS and the US Army (patents issued and exclusively licensed to SafetySpect)
- We bring further technology improvements (medical and military grade development) resulting numerous new IP for broader commercialization



CSI DEVELOPMENT ROADMAP & MILESTONES



GO TO MARKET

2023

CSI government contracts and sales

Q1 2024

CSI commercial launch

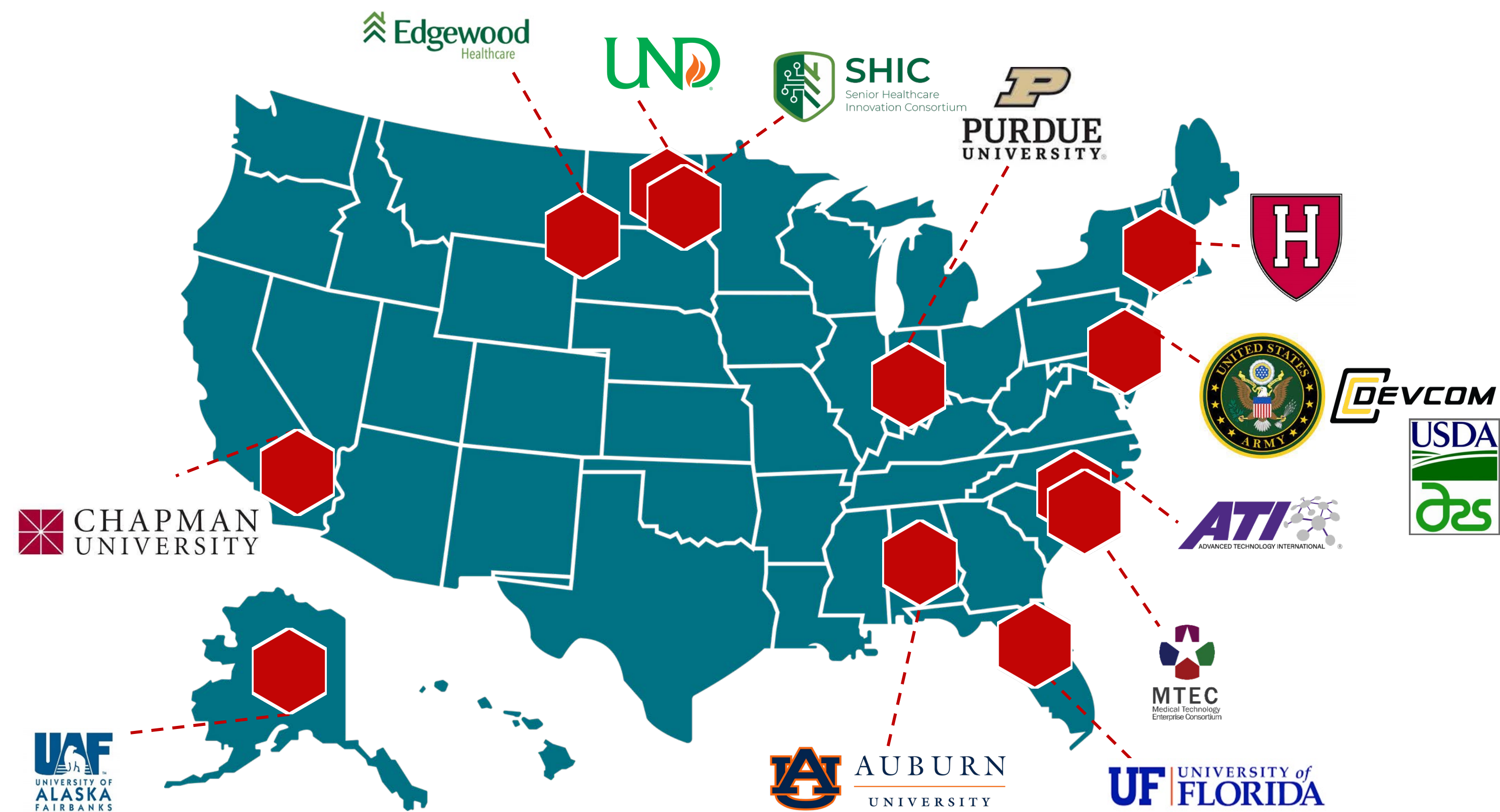
2025 or 2026

Medical and military
commercial launch

B2B Strategy

- Strategic Partners
- Distributors
- Joint Ventures
- Key advisors with market access
- Publications, conferences and trade shows

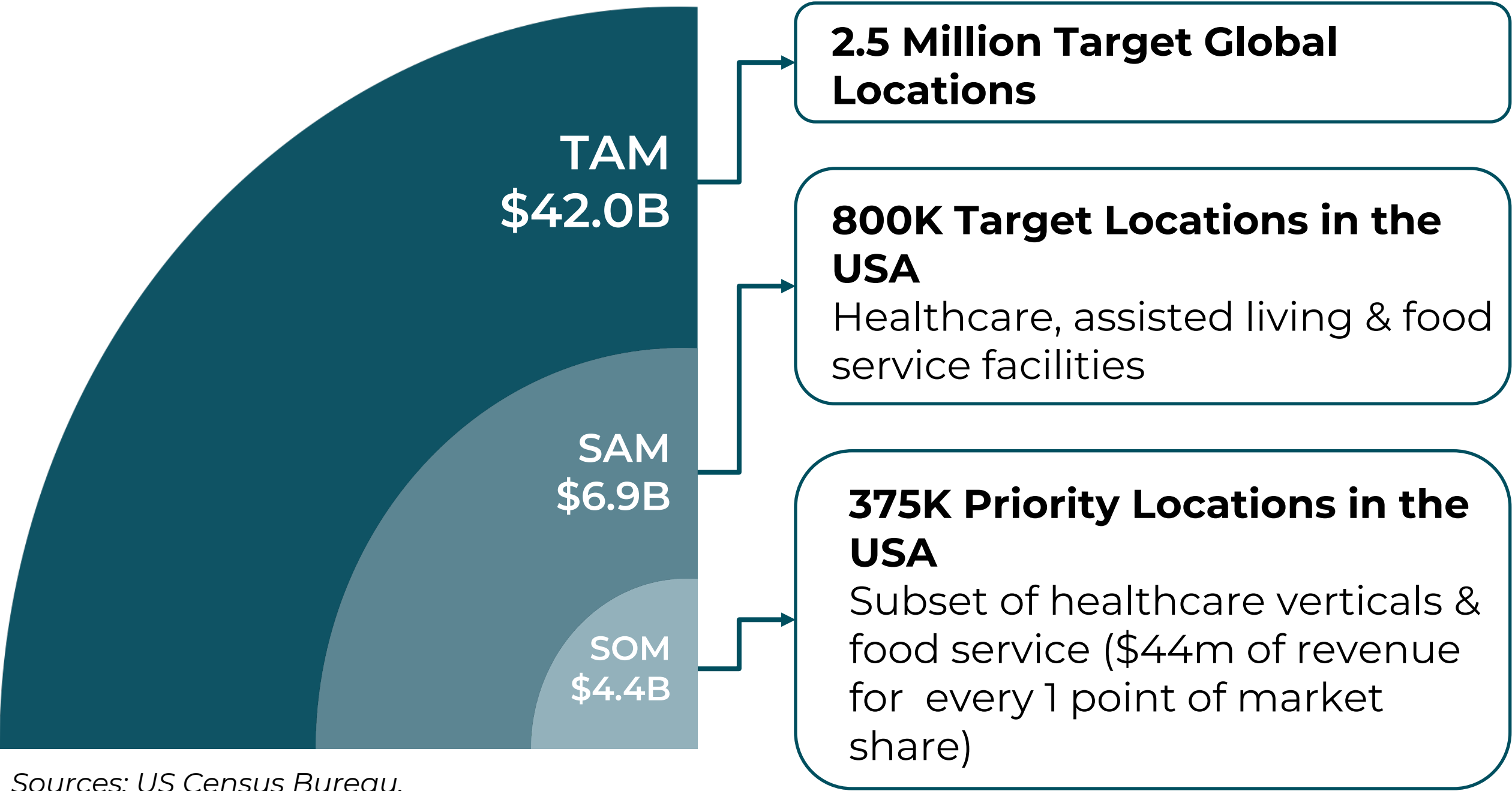
STRATEGIC PARTNERS AND COLLABORATORS



Government Funders :

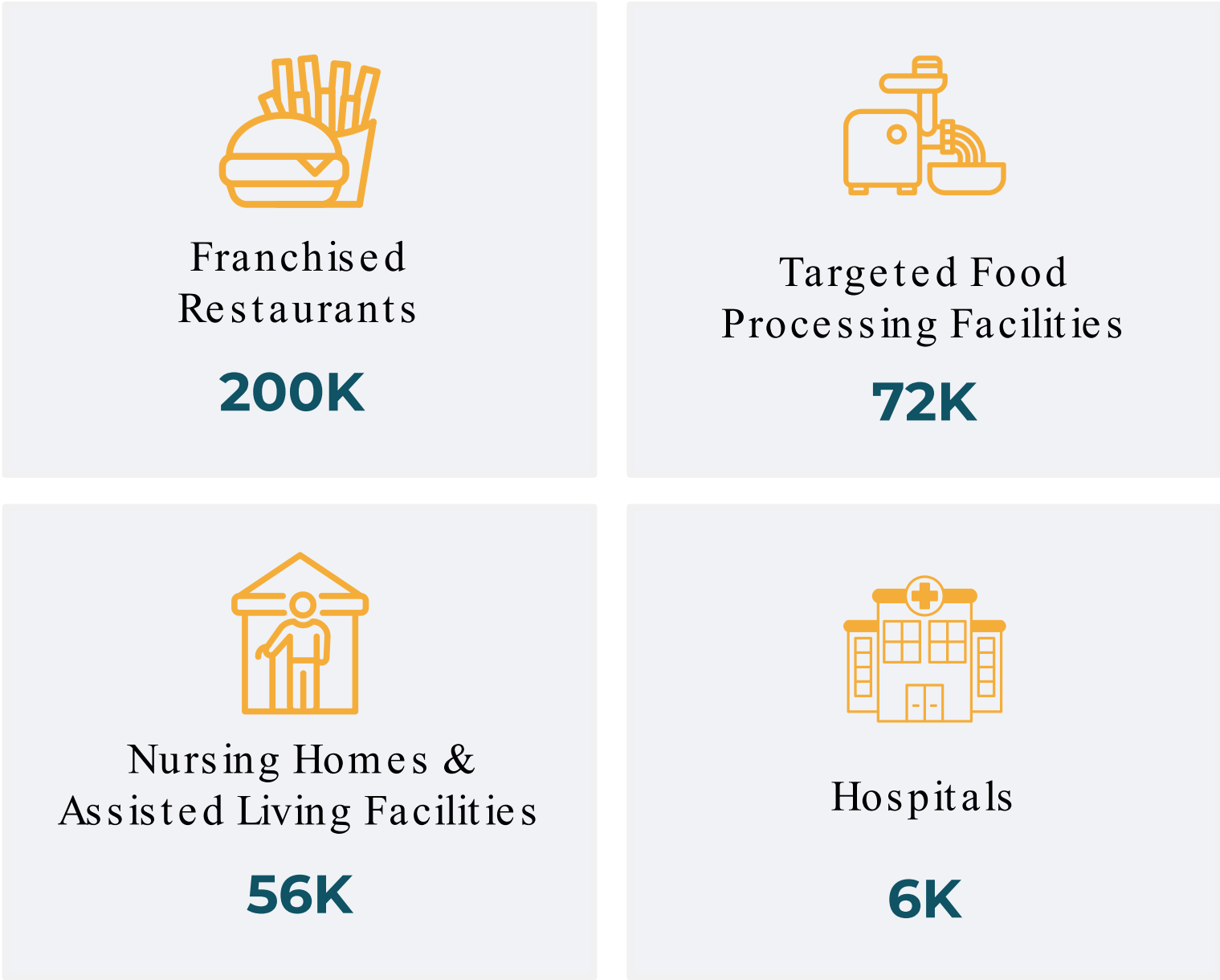


ADDRESABLE MARKETS



Sources: US Census Bureau, Business Wire, Statista

SOM Breakdown



➤ TAM - Total Addressable Market; SAM - Serviceable Available Market; SOM - Serviceable Obtainable Market

FUTURE PIPELINE TECHNOLOGIES



WoundExam

Medical device & healthcare segment

- 📦 Skin injury infection management
- 📦 Burns and wounds
- 📦 Civilian & military applications



SpecTrails

Food traceability, quality & digital supply chain solutions

- 📦 Food quality and traceability supply chain solution
- 📦 Food authentication, quality and shelf-life measurements

Advanced R&D Stage / Not included in financial projections
Funded by government grants & contracts