



## Introduction

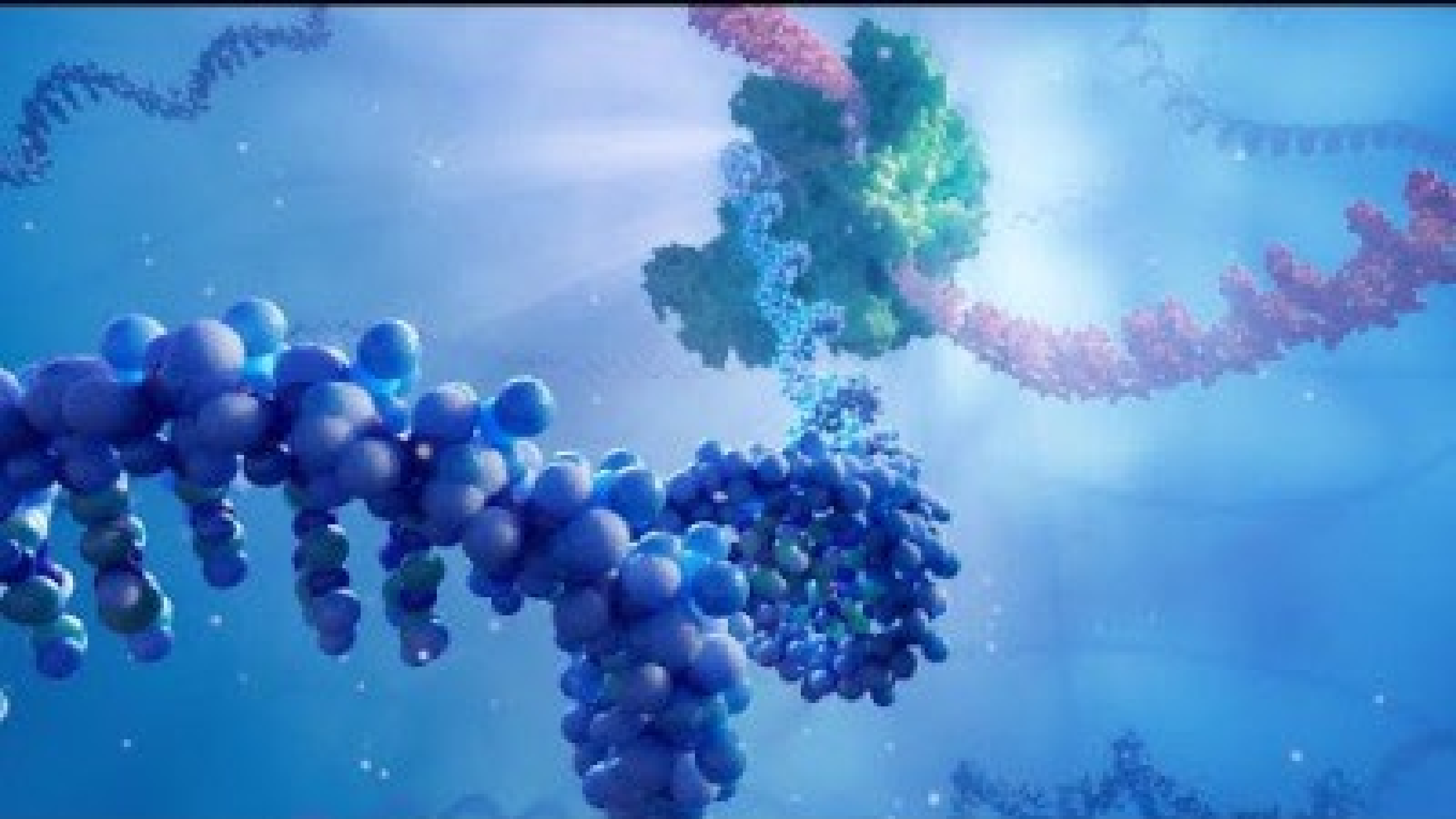
Midwest Biodefense Summit: Expanding the  
Emerging Biosciences Ecosystem

Todd Vannelli, Director of R&D

March 15, 2023

Confidential & Proprietary | © 2022 Aldevron





# Our Mission

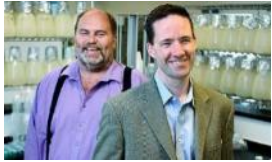
We manufacture biologics to the highest quality, meeting precise client requirements through smart investments and innovation. By delivering best in class service and superior value to those with whom we work, we are providing the products necessary to make meaningful changes worldwide..



# Timeline and collaborations

**1998**

Michael Chambers and John Ballantyne launch Aldevron at North Dakota State University



**2009**

Opened protein site in Madison



**2014**

Amber Valley Parkway expansion

**2018**

New GMP Facility operational



**2021**

Acquired by Danaher

**2022**

**900+**  
employees

New 189K SF GMP Facility

New 45K SF RG Facility

Madison Expansion

Aldevron acquires Nature Technology Corporation

**2020**  
**530+**  
employees



**2020**  
Kevin Ballinger joins as CEO

**2007**  
**50**  
employees

**2014**  
**100**  
employees

**2016**  
**150**  
employees

**2018**  
**200**  
employees

1998 2000 2002 2004 2008 2012 2014 2016 2018 2020 2022

**2002**

Aldevron successfully manufactures West Nile vaccine



**2007**

Aldevron successfully manufactures experimental Andes virus vaccine



**2012**

Aldevron successfully manufactures Andes virus vaccine



**2016**

Aldevron successfully manufactures Malaria vaccine



**2017-2018**

Aldevron successfully manufactures Zika virus vaccine



**2020**

Aldevron successfully manufactures experimental cancer vaccine



**2020**

Aldevron successfully manufactures experimental neoantigen cancer vaccine



**2020**

Aldevron successfully manufactures components for experimental COVID-19 vaccine



**2020**

Aldevron supports and supplies pDNA genetic template for Moderna mRNA COVID-19 vaccine



Confidential & Proprietary

# Aldevron at a Glance

## Quick Facts

- A leading global manufacturer of plasmid DNA, mRNA, gene editing enzymes and other proteins
- Founded in 1998 by Michael Chambers and John Ballantyne at North Dakota State University
- Partner to leading pharma / biotech companies and research institutions
- Operates the world's largest GMP plasmid DNA facility in Fargo, ND. Protein facility in Madison, WI
- 1,000+ employees in Fargo, ND, Lincoln, NE, and Madison, WI

## Key Highlights

25 Years of Experience  
in Plasmid DNA

140,000+ Lots  
Manufactured

650+ Unique Clients

>325,000 sq. ft. Facility  
Footprint focused on  
Manufacturing



DNA

Transcription ►



mRNA

Translation ►

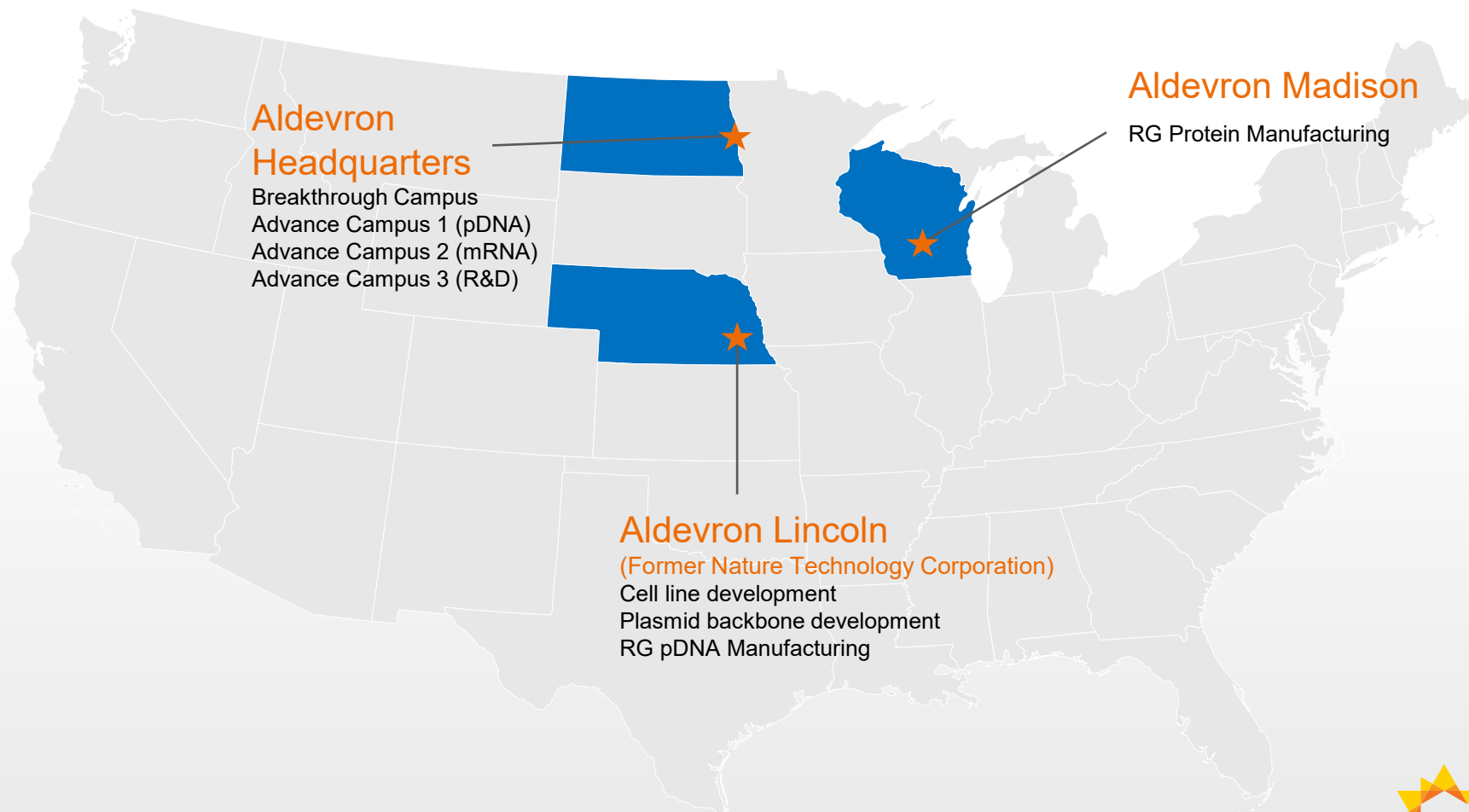


Proteins









# Aldevron Footprint



# Manufacturing footprint

	Breakthrough Campus (Fargo, North Dakota)	Advance Campus (Fargo, North Dakota)	Madison Campus (Madison, Wisconsin)	Lincoln Campus (Lincoln, Nebraska)
				
Facility Details	265,000 square feet of new, purpose-built construction HQ & additional office space	56,500 collective square feet, newly renovated	65,000 square feet, newly renovated ISO 13485 Certified	6,500 square feet
Capabilities	cGMP and GMP-Source® Manufacturing of Plasmid DNA, RNA & Proteins Expanded QA, QC & Regulatory	Research grade DNA plasmids Research grade RNA Research & development	Custom process development, manufacture & testing of recombinant proteins and enzymes	Research grade Nanoplasmid™ Vector, REVIVER cell line and HyperGRO manufacturing platform
Fast Facts	More than 4,800 lots of GMP-Source® & cGMP DNA produced Pre-License Inspection (PLI) and a general GMP audited*	More than 165,000 lots of DNA produced for research or pre-clinical work	First to offer inventoried GMP CRISPR <i>SpyFi</i> ™ Cas9 Nuclease	Invented the antibiotic marker-free Nanoplasmid™

\*The Center for Biologics Evaluation and Research (CBER) visited site in November 2021. CBER conducted a Pre-License Inspection (PLI) and a general GMP audit. No Form FDA 483 was issued and the inspection was classified as no action indicated (NAI)

Confidential & Proprietary





# Breakthrough Campus

## Corporate Headquarters

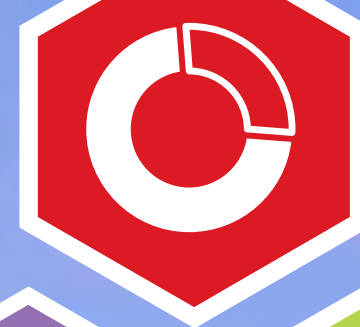
Clinical & Commercial Grade Manufacturing

**Location:** 4055 41<sup>st</sup> Ave South

**Associates:** ~800

**Expertise:** GMP-Source®, cGMP  
Plasmid DNA, mRNA, Protein

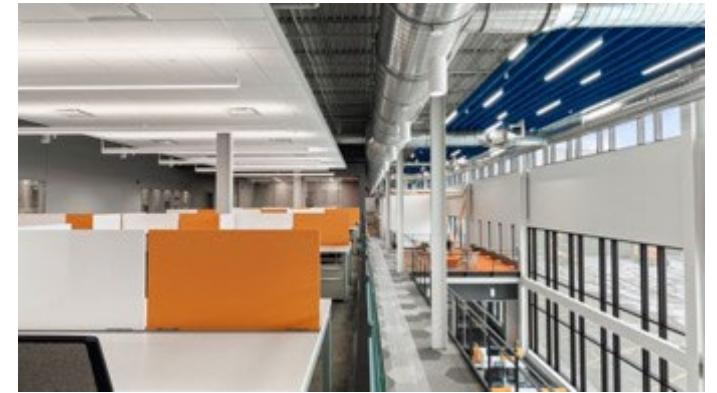
**GMP Facility:** 265,000 SF



Confidential & Proprietary







Confidential & Proprietary



# Advance Campus

**Location:** 3100 South University Drive + others

**Buildings:** Renovated main building (pictured) with two additional legacy buildings within three blocks

**Expertise:** Plasmid DNA & RNA for Research Applications and Process Development, R&D

**Associates:** ~100

**Facility:** 45,000 SF





