



REGIONAL BUS TOUR



SEPT. 11, 2024

FARGO JET CENTER

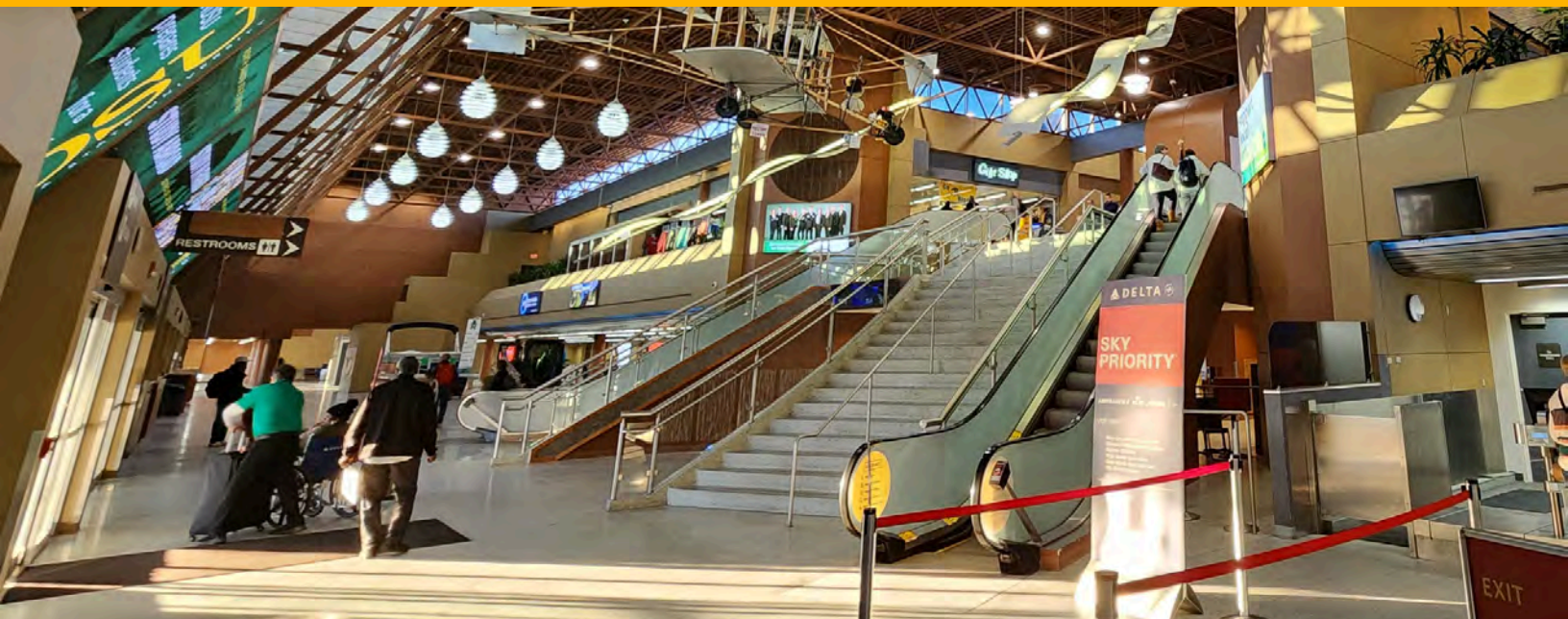
Fargo Jet Center, headquartered in Fargo, ND (KFAR), and subsidiary Premier Jet Center, based in Minneapolis, MN (KFCM), are recognized leaders in the provision of aviation services and have been ranked among the top aviation service companies in the Americas by our clients.



Both facilities offer a full-service FBO including refueling services, maintenance, avionics, aircraft charter and management, and interior and paint services. Premier Jet Center also serves as the base for the company's aircraft sales division, Exclusive Aircraft Sales, which offers aircraft sales, brokerage, and acquisitions. Additionally, Fargo Jet Center operates a Cessna-certified flight school.

Fargo Jet Center and Premier Jet Center are members of the National Business Aviation Association (NBAA), the Avfuel-branded FBO Network, and the Paragon Aviation Network. Exclusive Aircraft Sales is also a member of the International Aircraft Dealers Association (IADA).





HECTOR INTERNATIONAL AIRPORT



In 1982, Hector Field became Hector International Airport and U. S. Customs opened an office on the field in 1985. The present terminal was built in 1986. Hector International Airport completed a passenger terminal expansion and update project in October 2008. The project updated the existing terminal building, added a fifth gate and third baggage claim, and expanded the security checkpoint area.

Most recently in 2022, the airport undertook planning for another expansion project to add an additional four gates and update the existing areas within the terminal and completion is planned for early 2027. 2023 was the busiest year for total passengers for the airport. For the first time ever, over one million total passengers travelled through Hector International Airport. The Municipal Airport Authority has authorized a \$43 million parking ramp and \$4 million skyway that will connect to the enhanced terminal. The four-story structure will have around 977 parking stalls and a roof and will be partially enclosed.



AMERICAN CRYSTAL SUGAR

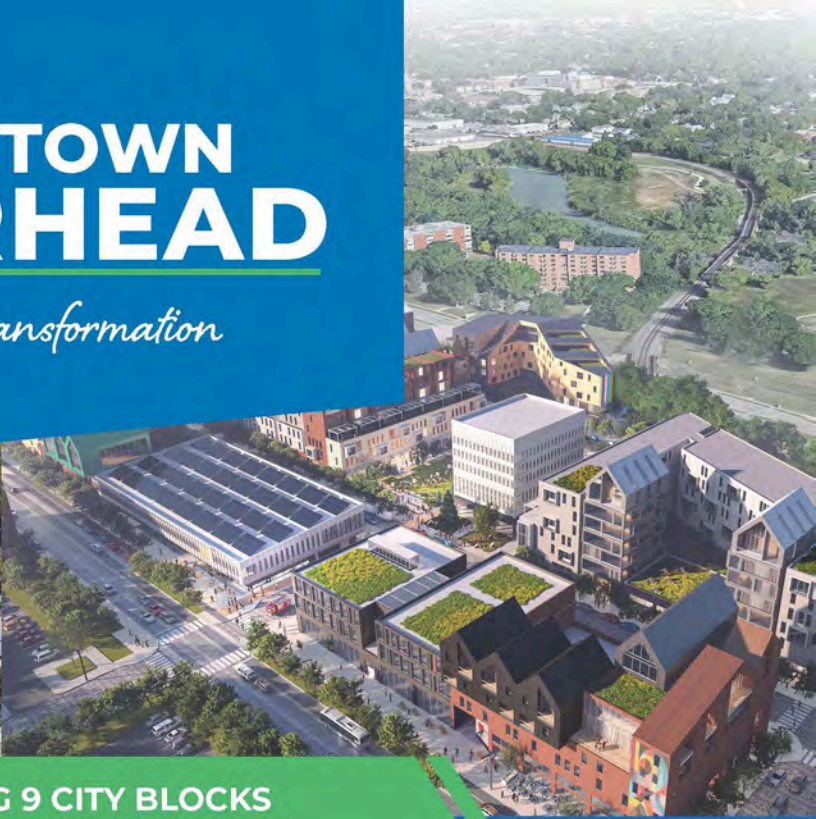


American Crystal Sugar Company is a grower-owned cooperative that has 2,600 shareholders who grow and deliver beets to the company. American Crystal Sugar headquarters are located in Moorhead, MN and they just celebrated 50 years as a cooperative in 2023.

- Harvest Time - We started our factories on August 15. Currently, we are in a period we call pre-harvest where we only harvest enough beets at select piling sites to keep the factories running and have a 3-5 day supply on the ground. Typically, operate during this time period M-F from 8am-5pm unless too many or not enough beets. On October 1, we will start the full harvest where everyone is harvesting 24/7 until completed. We have a total of 39 piling sites throughout the valley.
- Last year, we harvested 12.7 million tons of sugarbeets and produced 3.4 billion pounds of sugar, .5 million tons of pulp, .2 million tons of molasses, and other by-products. A sugarbeet is approximately 77% water, 18% sugar and 5% pulp. The entire sugarbeet is used in our production and the water is either evaporated or cleaned and discharged to the river.
- ACSC operates 5 plants in the Red River Valley (Moorhead, Crookston and East Grand Forks, Minnesota; Hillsboro and Drayton, North Dakota)
- We produce approximately 16% of the domestic consumption (90% is sold to industrial users, 10% is sold to retails). ACSC is the largest beet sugar producer in the US.

DOWNTOWN MOORHEAD

A Historic Transformation



REDEVELOPING 9 CITY BLOCKS
IN THE HEART OF MOORHEAD

Transforming Downtown Living, Businesses, and Experiences

1,200 UNITS
RESIDENTIAL

140,000 SF
COMMERCIAL

150,000 SF
CIVIC

2,000
PARKING STALLS



ROTARY
NATURAL
PLAY HILL
COMPLETE

NEARLY
**\$500
MILLION**
IN NEW DEVELOPMENT
ANTICIPATED



CIVIC PLAZA
IN DEVELOPMENT



FAIRMONT FLATS
UNDER CONSTRUCTION



COMMUNITY CENTER LIBRARY
UNDER CONSTRUCTION



600 BLOCK BUILDING
UNDER CONSTRUCTION

 FUTURE AREAS OF
DEVELOPMENT

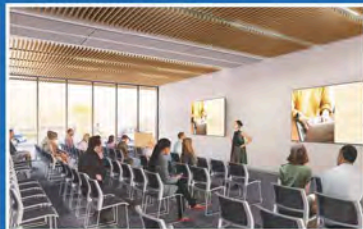


COMMUNITY CENTER LIBRARY

WALK, PLAY, STUDY, GATHER, ATTEND, READ, INSPIRE:

Walking Track
 Indoor Playground
 Presentation Hall
 Main/Children's Library
 Lounge Areas

Center for Entrepreneurship
 Meeting/Podcast Rooms
 Conference Room
 Study/Work Spaces
 and more!



ROTARY NATURAL PLAY HILL AND BIKE PARK



600 BLOCK BUILDING

APARTMENTS, INDOOR PARKING, COMMERCIAL/FITNESS



FAIRMONT FLATS



11 ST UNDERPASS



CIVIC PLAZA



Shelly Carlson
 Mayor | 218.299.5307
 mayor@moorheadmn.gov



Dan Mahli
 City Manager | 218.299.5303
 danmahli@moorheadmn.gov



Derrick LaPoint
 CEO, Downtown Moorhead Inc | 218.443.1361
 dlapoint@dtmoorhead.org



CONCORDIA COLLEGE



Concordia College is located in Moorhead, Minnesota, and was founded Oct. 31, 1891, by Norwegian settlers. Dr. Colin C. Irvine is the college's 12th president; he began serving July 1, 2023. Concordia College is accredited by the Higher Learning Commission and is a member of the North Central Association of Colleges and Schools.



Enrollment

More than 1,800 students from 36 states and 62 countries representing 17 religions and thought traditions are enrolled.



Faculty

We employ 125 full-time faculty, including award-winning composers and writers and national experts in a wide range of fields.



Academics

We offer more than 140 areas of study, including 12 preprofessional programs such as medicine, law, pharmacy, and engineering.



BLUESTEM AMPHITHEATER

More than just a music venue, Bluestem is a quintessential Fargo-Moorhead experience where some of the best memories are made. Each summer, thousands of music fans gather from near and far to take in the variety of acts booked at the amphitheater. There truly is something for everyone.

Nestled along the Red River of the North in Moorhead, MN, Bluestem Amphitheater features an outdoor stage with seating for 3,000. The venue is a key element of Bluestem Center for the Arts, a first-class arts facility that also offers a unique indoor educational center, serving as a performance venue available for rent. The Center's beautiful grounds are made up of picturesque river views, grassy meadows, woods, and wildlife.

Bluestem Center for the Arts is the home of Trollwood Performing Arts School, a testament to our region's unfaltering commitment to the arts. Opening its doors in 2009, the Center was built with the generous support of the entire Fargo-Moorhead community.

The venue represents an exciting collaboration between Fargo Public Schools and the City of Moorhead. It is programmed and managed by Trollwood Performing Arts School, a program of Fargo Public Schools, which leases the facility from the City of Moorhead.

Bluestem Center for the Arts hosts many programs that inspire a love for the arts in community members of all ages. The facility is used for school arts curriculum and activities, public performances, exhibitions, community festivals, corporate retreats, conferences, and other private rental opportunities. Since opening, thousands of patrons have enjoyed a broad range of programming including theatre, arts educational opportunities, concerts, dance, music, and special events.



SUITE SHOTS



Opened in 2022, Suite Shots is a sports entertainment complex that features an inclusive, high-tech golf game, paired with an outstanding food and beverage menu, climate-controlled hitting bays, and music.



MICROSOFT



Microsoft's presence in the Fargo community can be traced back to Great Plains Software, a once-small technology company led by current North Dakota Governor Doug Burgum. In September 1999, Great Plains Software opened the doors to the Horizon Building, the first building at Microsoft Fargo's current location. Since then, the campus has evolved, and was acquired by Microsoft in May of 2001. Today, the Microsoft campus boasts more than 850 employees.



ALDEVRON



Microsoft's presence in the Fargo community can be traced back to Great Plains Software, a once-small technology company led by current North Dakota Governor Doug Burgum. In September 1999, Great Plains Software opened the doors to the Horizon Building, the first building at Microsoft Fargo's current location. Since then, the campus has evolved, and was acquired by Microsoft in May of 2001. Today, the Microsoft campus boasts more than 850 employees.



GRAND FARM



As an initiative led by Emerging Prairie, an organization dedicated to developing the region's startup and entrepreneurial ecosystem, Grand Farm was created to solve the biggest problems facing agriculture. It started around a community challenge and has transformed into a global leader in AgTech innovation. By 2018, local business and civic leaders had come together to champion the idea. Local AgTech business owners, Kevin and Stacey Biffert, donated land to be used for the concept.

By spring 2019, Grand Farm was positioned with land, partners, and projects. The U.S. Secretary of Agriculture, Sonny Perdue, came to North Dakota as a guest of Senator John Hoeven to help break ground on the Grand Farm Test Site. And in the fall of that year, Microsoft pledged \$1.5 Million to support and accelerate Grand Farm. In early 2022, Grand Farm was awarded a \$10 Million matching grant by the North Dakota Legislature and State Department of Commerce to further advance agriculture technology through a world-class innovation campus. Today, Grand Farm partners are collaborating on cutting-edge autonomous and advanced agriculture technology innovations, expanding their reach from regional to global. Most recently, Grand Farm opened their Innovation Shop in June of 2024.



FARGO PARKS SPORTS CENTER

The longtime vision for Fargo's own destination indoor sporting, event and activity facility is now realized with Phase I of the Fargo Parks Sports Center completed and Phase II expected in January of 2025. This multipurpose community recreation facility will accommodate nearly any indoor sport, activity, tournament or special event and will span more than 390,000 square feet of indoor space.

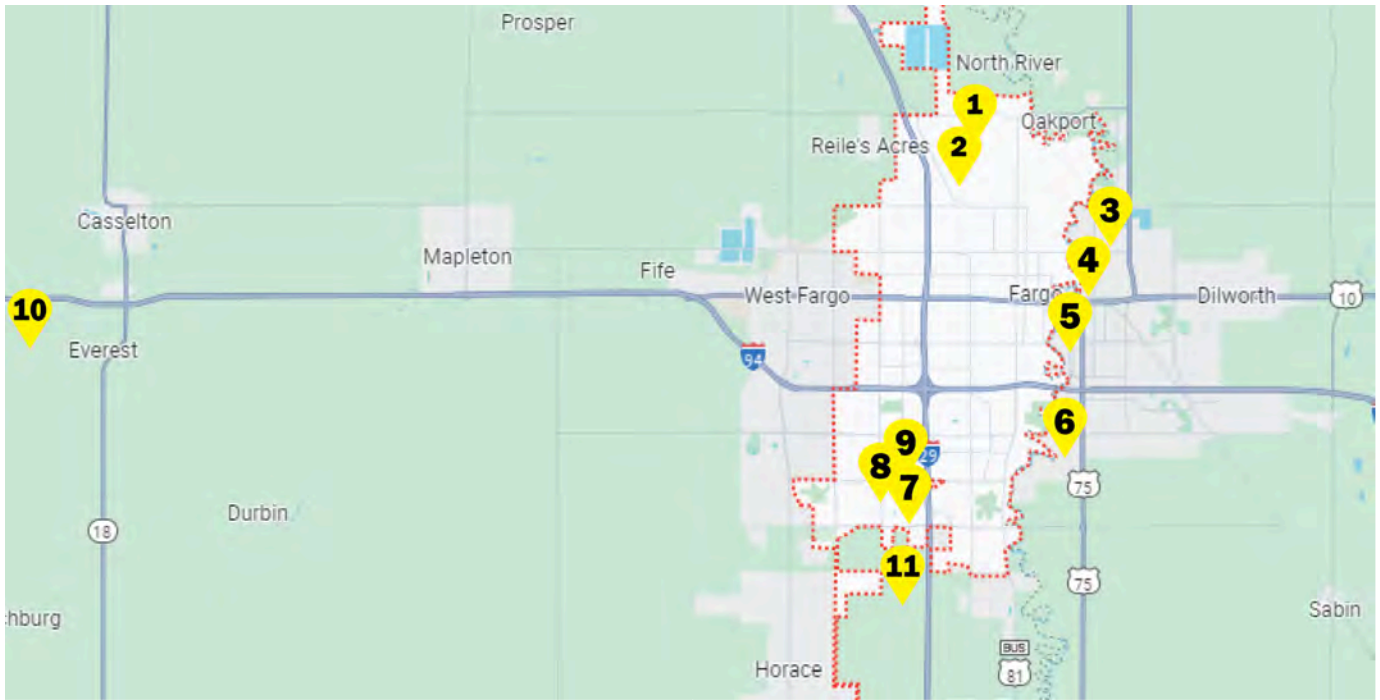
Situated on 123-acres in the quickly budding area between 52nd Avenue South and 64th Avenue South in South Fargo, the Fargo Parks Sports Center will address a critically unmet community need for indoor recreation facilities to serve Fargo and the surrounding region. Once both phases are complete, the Center will include one full size turf field, an elevated walking track, eight hardwood courts, two sheets of ice, six pickleball courts, multiple community and meeting rooms, an indoor playground, food and beverage services, Sanford Sports Performance facilities and Fargo Park District staff offices.

This multi-year project has involved many helping hands, community supporters, and dedicated staff members to help manage. Since 2021 when the project was first announced, we have been anticipating the grand opening of Phase I of this project. Today, we diligently work through Phase II.

Phase I: Opened June 2024 - This phase included the opening of the turf field, 4 hardwood courts, an indoor walking track, multi-purpose community spaces, Sanford Sports, Fargo Park District's staff offices, and food and beverage services.

Phase II: Opening January 2025 - Coming soon, you can enjoy the opening of our remaining amenities, including:

- 4 additional hardwood courts
- 2 sheets of ice
- 6 pickleball courts
- Indoor playground with 4 party rooms
- Additional community meeting spaces.



1. Fargo Jet Center
2. Hector International Airport
3. American Crystal Sugar Factory
4. Downtown Moorhead Redevelopment
5. Concordia College
6. Bluestem Amphitheater
7. Suite Shots
8. Microsoft
9. Aldevron
10. Grand Farm
11. Fargo Parks Sports Center