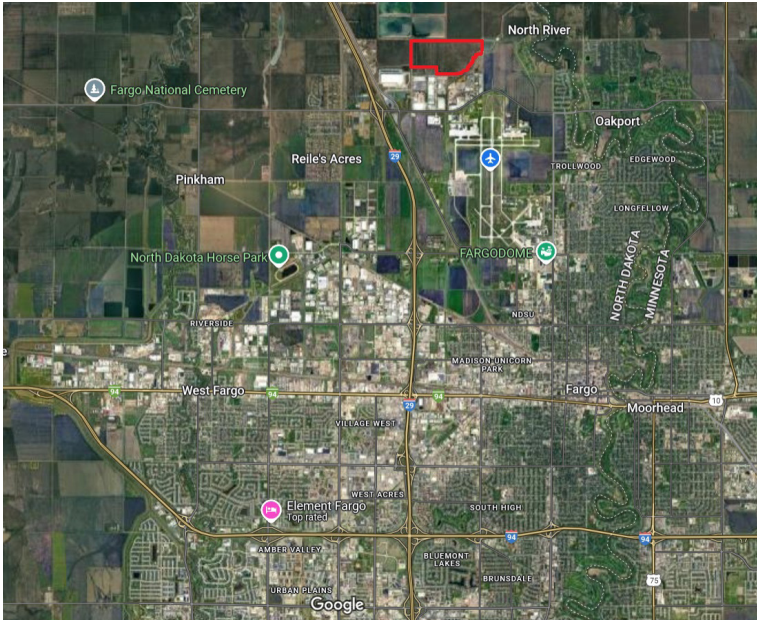


RLN NORTH ACREAGE

FARGO, CASS COUNTY, NORTH DAKOTA

Greater Fargo Moorhead Economic Development Corporation



GENERAL SITE INFORMATION

Location	North Boundary: 52nd Ave North South Boundary: 46th Ave North & County Drain #10 West Boundary: 37th St. N. East Boundary: 25th St. N. & County Drain #10
Owner	Robert L Nelson Revocable Trust and County 20 Storage & Transfer Inc
Size	263.6 acres
Zoning	Site is partially un-zoned and partially in Fargo's ET area
Asking Price	\$1.50 / sq. ft.
Highway Access	Site is just east of I-29, approximately 1.5 miles to the I-29 interchange
Air Access	Hector International Airport (FAR) is 3.3 miles
Rail Access	No Rail Access

UTILITY INFORMATION

Electric Power	Cass County Electric Coop Three-phase 15 kV underground and overhead 5 MW capacity immediately, 3 miles to nearest substation
Natural Gas	Xcel Energy 4" main 26-66 psi
Water	City of Fargo 12" and 16" watermains 1 MGD available capacity
Wastewater	City of Fargo 10" Forcemain and 18" Gravity line 5 MGD treatment capacity
Storm Water	Developer owned with possibility for city to take over; developer may elect to construct a regional or individual pond.
Telecom/Broadband	Century Link, Sparklight, Midco, ViaSat, Hughs Net, 1000 Mbps max

RLN NORTH ACREAGE

FARGO, CASS COUNTY, NORTH DAKOTA

SITE DUE DILIGENCE DOCUMENTATION AVAILABILITY

Title Commitment	X	Transportation Access Map	X
Survey		Utility Service Maps	X
Site Dimensions and Configuration	X	FEMA Floodplain Designation	X
Phase 1 Environmental Assessment		Wetlands Map	
Geotechnical Soil Survey	Proxy	Archeological and Historical Use Assessment	NR
Master Plan		Endangered Species Assessment	NR
Covenants and Restrictions	X	Air Attainment Status	X

NR = Not Required

X= Indicates completed study with documentation available

COMMUNITY INFORMATION

Community Profile	X	Demographics	X
Business Services and Amenities		State and Local Incentives Overview	X
Industrial Support Services/Suppliers		Local Letters of Support	X

NR = Not Required

X= Indicates completed information with documentation available

Full site data, studies, reports and files can be accessed by contacting Ryan Aasheim (contact information below).

CONTACT

GREATER FARGO MOORHEAD ECONOMIC DEVELOPMENT CORPORATION

Ryan Aasheim, Chief Business Development Officer

51 Broadway North, Suite 500, Fargo, ND 58102 | +1 701-364-1900

raasheim@fmedc.com | <https://gfmedc.com>

OWNER/OWNER'S REPRESENTATIVE

Tari Birkelo, County 20 Storage & Transfer Inc

4083 37th St N, Fargo, ND 58102 | +1 701-491-9290

tari.birkelo@skylogistics.com